

# Tuning Canons

*New River Youth Symphony*

Flute 1

## 1. C Major

1.                      2.                      3.                      4.

Musical notation for C Major tuning canon. The staff is in treble clef with a 4/4 time signature. The melody consists of four measures: C4 (quarter), E4 (quarter), G4 (quarter), and F4 (quarter). The first measure is marked '1.', the second '2.', the third '3.', and the fourth '4.'. The piece concludes with a double bar line, a repeat sign, and a final C4 note.

## 2. G Major

1.                      2.                      3.                      4.

Musical notation for G Major tuning canon. The staff is in treble clef with a key signature of one sharp (F#) and a 4/4 time signature. The melody consists of four measures: G4 (quarter), B4 (quarter), D5 (quarter), and C5 (quarter). The first measure is marked '1.', the second '2.', the third '3.', and the fourth '4.'. The piece concludes with a double bar line, a repeat sign, and a final G4 note.

## 3. D Major

1.                      2.                      3.                      4.

Musical notation for D Major tuning canon. The staff is in treble clef with a key signature of two sharps (F# and C#) and a 4/4 time signature. The melody consists of four measures: D4 (quarter), F#4 (quarter), A4 (quarter), and G4 (quarter). The first measure is marked '1.', the second '2.', the third '3.', and the fourth '4.'. The piece concludes with a double bar line, a repeat sign, and a final D4 note.

## 4. A Major

1.                      2.                      3.                      4.

Musical notation for A Major tuning canon. The staff is in treble clef with a key signature of three sharps (F#, C#, and G#) and a 4/4 time signature. The melody consists of four measures: A4 (quarter), C#5 (quarter), E5 (quarter), and D5 (quarter). The first measure is marked '1.', the second '2.', the third '3.', and the fourth '4.'. The piece concludes with a double bar line, a repeat sign, and a final A4 note.

# Tuning Canons

*New River Youth Symphony*

Flute 2

## 1. C Major

1.                      2.                      3.                      4.

Musical notation for C Major tuning canon. The staff is in treble clef with a 4/4 time signature. The melody consists of four measures: C4 (quarter), E4 (quarter), G4 (quarter), and F4 (quarter). The first measure is marked '1.', the second '2.', the third '3.', and the fourth '4.'. The piece concludes with a double bar line, a repeat sign, and a final C4 note with a fermata.

## 2. G Major

1.                      2.                      3.                      4.

Musical notation for G Major tuning canon. The staff is in treble clef with a key signature of one sharp (F#) and a 4/4 time signature. The melody consists of four measures: G4 (quarter), B4 (quarter), D5 (quarter), and C5 (quarter). The first measure is marked '1.', the second '2.', the third '3.', and the fourth '4.'. The piece concludes with a double bar line, a repeat sign, and a final G4 note with a fermata.

## 3. D Major

1.                      2.                      3.                      4.

Musical notation for D Major tuning canon. The staff is in treble clef with a key signature of two sharps (F# and C#) and a 4/4 time signature. The melody consists of four measures: D4 (quarter), F#4 (quarter), A4 (quarter), and G4 (quarter). The first measure is marked '1.', the second '2.', the third '3.', and the fourth '4.'. The piece concludes with a double bar line, a repeat sign, and a final D4 note with a fermata.

## 4. A Major

1.                      2.                      3.                      4.

Musical notation for A Major tuning canon. The staff is in treble clef with a key signature of three sharps (F#, C#, and G#) and a 4/4 time signature. The melody consists of four measures: A4 (quarter), C#5 (quarter), E5 (quarter), and D5 (quarter). The first measure is marked '1.', the second '2.', the third '3.', and the fourth '4.'. The piece concludes with a double bar line, a repeat sign, and a final A4 note with a fermata.

# Tuning Canons

Oboe

*New River Youth Symphony*

## 1. C Major

1.                      2.                      3.                      4.

Musical notation for C Major tuning canon. The staff is in 4/4 time with a treble clef. The key signature has no sharps or flats. The melody consists of four measures: 1. C4 (quarter), E4 (quarter), G4 (quarter), F4 (quarter); 2. E4 (quarter), G4 (quarter), A4 (quarter), G4 (quarter); 3. G4 (quarter), F4 (quarter), E4 (quarter), D4 (quarter); 4. F4 (quarter), E4 (quarter), D4 (quarter), C4 (quarter). The piece concludes with a repeat sign and a final C4 note.

## 2. G Major

1.                      2.                      3.                      4.

Musical notation for G Major tuning canon. The staff is in 4/4 time with a treble clef. The key signature has one sharp (F#). The melody consists of four measures: 1. G4 (quarter), B4 (quarter), D5 (quarter), C5 (quarter); 2. B4 (quarter), D5 (quarter), E5 (quarter), D5 (quarter); 3. D5 (quarter), C5 (quarter), B4 (quarter), A4 (quarter); 4. C5 (quarter), B4 (quarter), A4 (quarter), G4 (quarter). The piece concludes with a repeat sign and a final G4 note.

## 3. D Major

1.                      2.                      3.                      4.

Musical notation for D Major tuning canon. The staff is in 4/4 time with a treble clef. The key signature has two sharps (F# and C#). The melody consists of four measures: 1. D4 (quarter), F#4 (quarter), A4 (quarter), G#4 (quarter); 2. F#4 (quarter), A4 (quarter), B4 (quarter), A4 (quarter); 3. A4 (quarter), G#4 (quarter), F#4 (quarter), E4 (quarter); 4. G#4 (quarter), F#4 (quarter), E4 (quarter), D4 (quarter). The piece concludes with a repeat sign and a final D4 note.

## 4. A Major

1.                      2.                      3.                      4.

Musical notation for A Major tuning canon. The staff is in 4/4 time with a treble clef. The key signature has three sharps (F#, C#, and G#). The melody consists of four measures: 1. A4 (quarter), C#5 (quarter), E5 (quarter), D#5 (quarter); 2. C#5 (quarter), E5 (quarter), F#5 (quarter), E5 (quarter); 3. E5 (quarter), D#5 (quarter), C#5 (quarter), B4 (quarter); 4. F#5 (quarter), E5 (quarter), D#5 (quarter), A4 (quarter). The piece concludes with a repeat sign and a final A4 note.

# Tuning Canons

*New River Youth Symphony*

Clarinet 1

## 1. C Major

1.                      2.                      3.                      4.

Musical notation for C Major tuning canon. The staff is in treble clef with a key signature of one sharp (F#) and a 4/4 time signature. The melody consists of four measures: 1. F#4 (quarter), A4 (quarter), C5 (quarter), B4 (quarter); 2. A4 (quarter), G4 (quarter), F#4 (quarter), E4 (quarter); 3. D4 (quarter), C4 (quarter), B3 (quarter), A3 (quarter); 4. G3 (quarter), F#3 (quarter), E3 (quarter), D3 (quarter). The piece concludes with a repeat sign and a final whole note D3.

## 2. G Major

1.                      2.                      3.                      4.

Musical notation for G Major tuning canon. The staff is in treble clef with a key signature of two sharps (F#, C#) and a 4/4 time signature. The melody consists of four measures: 1. G4 (quarter), A4 (quarter), B4 (quarter), C5 (quarter); 2. B4 (quarter), A4 (quarter), G4 (quarter), F#4 (quarter); 3. E4 (quarter), D4 (quarter), C4 (quarter), B3 (quarter); 4. A3 (quarter), G3 (quarter), F#3 (quarter), E3 (quarter). The piece concludes with a repeat sign and a final whole note G3.

## 3. D Major

1.                      2.                      3.                      4.

Musical notation for D Major tuning canon. The staff is in treble clef with a key signature of two sharps (F#, C#) and a 4/4 time signature. The melody consists of four measures: 1. D4 (quarter), E4 (quarter), F#4 (quarter), G4 (quarter); 2. A4 (quarter), B4 (quarter), C5 (quarter), B4 (quarter); 3. A4 (quarter), G4 (quarter), F#4 (quarter), E4 (quarter); 4. D4 (quarter), C4 (quarter), B3 (quarter), A3 (quarter). The piece concludes with a repeat sign and a final whole note D4.

## 4. A Major

1.                      2.                      3.                      4.

Musical notation for A Major tuning canon. The staff is in treble clef with a key signature of three sharps (F#, C#, G#) and a 4/4 time signature. The melody consists of four measures: 1. A4 (quarter), B4 (quarter), C#5 (quarter), B4 (quarter); 2. A4 (quarter), G#4 (quarter), F#4 (quarter), E4 (quarter); 3. D4 (quarter), C4 (quarter), B3 (quarter), A3 (quarter); 4. G#3 (quarter), F#3 (quarter), E3 (quarter), D3 (quarter). The piece concludes with a repeat sign and a final whole note A3.

# Tuning Canons

*New River Youth Symphony*

Clarinet 2

## 1. C Major

1.                      2.                      3.                      4.

Musical notation for C Major tuning canon. The staff is in treble clef with a key signature of one sharp (F#) and a 4/4 time signature. The melody consists of quarter notes: C4, D4, E4, F#4, G4, A4, B4, C5. The piece concludes with a double bar line, a repeat sign, and a final C4 note with a fermata.

## 2. G Major

1.                      2.                      3.                      4.

Musical notation for G Major tuning canon. The staff is in treble clef with a key signature of two sharps (F# and C#) and a 4/4 time signature. The melody consists of quarter notes: G4, A4, B4, C#5, D5, E5, F#5, G5. The piece concludes with a double bar line, a repeat sign, and a final G4 note with a fermata.

## 3. D Major

1.                      2.                      3.                      4.

Musical notation for D Major tuning canon. The staff is in treble clef with a key signature of three sharps (F#, C#, and G#) and a 4/4 time signature. The melody consists of quarter notes: D4, E4, F#4, G#4, A4, B4, C#5, D5. The piece concludes with a double bar line, a repeat sign, and a final D4 note with a fermata.

## 4. A Major

1.                      2.                      3.                      4.

Musical notation for A Major tuning canon. The staff is in treble clef with a key signature of three sharps (F#, C#, and G#) and a 4/4 time signature. The melody consists of quarter notes: A4, B4, C#5, D5, E5, F#5, G#5, A5. The piece concludes with a double bar line, a repeat sign, and a final A4 note with a fermata.

# Tuning Canons

*New River Youth Symphony*

Bass Clarinet

## 1. C Major

1.                      2.                      3.                      4.

Musical notation for C Major tuning canon. The staff is in treble clef with a key signature of one sharp (F#) and a 4/4 time signature. The melody consists of quarter notes: F#4, G4, A4, B4, C5, B4, A4, G4, F#4. The piece concludes with a double bar line, a repeat sign, and a final whole note chord of C5.

## 2. G Major

1.                      2.                      3.                      4.

Musical notation for G Major tuning canon. The staff is in treble clef with a key signature of two sharps (F#, C#) and a 4/4 time signature. The melody consists of quarter notes: G4, A4, B4, C#5, D5, C#5, B4, A4, G4. The piece concludes with a double bar line, a repeat sign, and a final whole note chord of G4.

## 3. D Major

1.                      2.                      3.                      4.

Musical notation for D Major tuning canon. The staff is in treble clef with a key signature of two sharps (F#, C#) and a 4/4 time signature. The melody consists of quarter notes: D4, E4, F#4, G4, A4, G4, F#4, E4, D4. The piece concludes with a double bar line, a repeat sign, and a final whole note chord of D4.

## 4. A Major

1.                      2.                      3.                      4.

Musical notation for A Major tuning canon. The staff is in treble clef with a key signature of three sharps (F#, C#, G#) and a 4/4 time signature. The melody consists of quarter notes: A3, B3, C#4, D4, E4, D4, C#4, B3, A3. The piece concludes with a double bar line, a repeat sign, and a final whole note chord of A3.

Bassoon

*New River Youth Symphony*  
**Tuning Canons**

1. C Major                    2.                    3.                    4.

2. G Major

Musical staff for C Major tuning canon. The staff is in bass clef with a 4/4 time signature. The melody consists of four measures: C4, G3, C4, G3. The first measure is marked '1.' and the second '2.'. The third measure is marked '3.' and the fourth '4.'. The piece concludes with a double bar line and a repeat sign, followed by a whole note C4 with a fermata.

1.                    2.                    3.                    4.

Musical staff for G Major tuning canon. The staff is in bass clef with a key signature of one sharp (F#). The melody consists of four measures: G3, B3, D4, G4. The first measure is marked '1.' and the second '2.'. The third measure is marked '3.' and the fourth '4.'. The piece concludes with a double bar line and a repeat sign, followed by a whole note G4 with a fermata.

3. D Major

1.                    2.                    3.                    4.

Musical staff for D Major tuning canon. The staff is in bass clef with a key signature of two sharps (F# and C#). The melody consists of four measures: D3, F#3, A3, D4. The first measure is marked '1.' and the second '2.'. The third measure is marked '3.' and the fourth '4.'. The piece concludes with a double bar line and a repeat sign, followed by a whole note D4 with a fermata.

4. A Major

1.                    2.                    3.                    4.

Musical staff for A Major tuning canon. The staff is in bass clef with a key signature of three sharps (F#, C#, and G#). The melody consists of four measures: A2, C#3, E3, A3. The first measure is marked '1.' and the second '2.'. The third measure is marked '3.' and the fourth '4.'. The piece concludes with a double bar line and a repeat sign, followed by a whole note A3 with a fermata.

# Tuning Canons

*New River Youth Symphony*

Alto Saxophone 1

## 1. C Major

1.                    2.                    3.                    4.

Musical notation for C Major tuning canon. The staff is in treble clef with a key signature of one sharp (F#) and a 4/4 time signature. The melody consists of quarter notes: C4, D4, E4, F#4, G4, A4, B4, C5. The piece concludes with a double bar line and a repeat sign, followed by a whole note C4.

## 2. G Major

1.                    2.                    3.                    4.

Musical notation for G Major tuning canon. The staff is in treble clef with a key signature of two sharps (F# and C#) and a 4/4 time signature. The melody consists of quarter notes: G4, A4, B4, C#5, D5, E5, F#5, G5. The piece concludes with a double bar line and a repeat sign, followed by a whole note G4.

## 3. D Major

1.                    2.                    3.                    4.

Musical notation for D Major tuning canon. The staff is in treble clef with a key signature of two sharps (F# and C#) and a 4/4 time signature. The melody consists of quarter notes: D4, E4, F#4, G4, A4, B4, C#5, D5. The piece concludes with a double bar line and a repeat sign, followed by a whole note D4.

## 4. A Major

1.                    2.                    3.                    4.

Musical notation for A Major tuning canon. The staff is in treble clef with a key signature of three sharps (F#, C#, and G#) and a 4/4 time signature. The melody consists of quarter notes: A4, B4, C#5, D5, E5, F#5, G#5, A5. The piece concludes with a double bar line and a repeat sign, followed by a whole note A4.



# Tuning Canons

Alto Saxophone 2

*New River Youth Symphony*

## 1. C Major

1.                    2.                    3.                    4.

Musical notation for C Major tuning canon. The staff is in treble clef with a key signature of two sharps (F# and C#) and a 4/4 time signature. The melody consists of quarter notes: C4, D4, E4, F#4, G4, A4, B4, C5. The piece concludes with a double bar line and a repeat sign, followed by a whole note C4.

## 2. G Major

1.                    2.                    3.                    4.

Musical notation for G Major tuning canon. The staff is in treble clef with a key signature of three sharps (F#, C#, G#) and a 4/4 time signature. The melody consists of quarter notes: G4, A4, B4, C#5, D5, E5, F#5, G5. The piece concludes with a double bar line and a repeat sign, followed by a whole note G4.

## 3. D Major

1.                    2.                    3.                    4.

Musical notation for D Major tuning canon. The staff is in treble clef with a key signature of four sharps (F#, C#, G#, D#) and a 4/4 time signature. The melody consists of quarter notes: D4, E4, F#4, G#4, A4, B4, C#5, D5. The piece concludes with a double bar line and a repeat sign, followed by a whole note D4.

## 4. A Major

1.                    2.                    3.                    4.

Musical notation for A Major tuning canon. The staff is in treble clef with a key signature of three sharps (F#, C#, G#) and a 4/4 time signature. The melody consists of quarter notes: A4, B4, C#5, D5, E5, F#5, G#5, A5. The piece concludes with a double bar line and a repeat sign, followed by a whole note A4.

# Tuning Canons

*New River Youth Symphony*

Tenor Saxophone

## 1. C Major

1. 2. 3. 4.

Musical notation for C Major tuning canon. The staff is in treble clef with a key signature of one sharp (F#) and a 4/4 time signature. The melody consists of four measures: 1. F#4 (quarter), G4 (quarter), A4 (quarter), B4 (quarter); 2. C5 (quarter), B4 (quarter), A4 (quarter), G4 (quarter); 3. F#4 (quarter), G4 (quarter), A4 (quarter), B4 (quarter); 4. C5 (quarter), B4 (quarter), A4 (quarter), G4 (quarter). The piece concludes with a double bar line and a final C5 note with a fermata.

## 2. G Major

1. 2. 3. 4.

Musical notation for G Major tuning canon. The staff is in treble clef with a key signature of two sharps (F# and C#) and a 4/4 time signature. The melody consists of four measures: 1. G4 (quarter), A4 (quarter), B4 (quarter), C5 (quarter); 2. D5 (quarter), C5 (quarter), B4 (quarter), A4 (quarter); 3. G4 (quarter), A4 (quarter), B4 (quarter), C5 (quarter); 4. D5 (quarter), C5 (quarter), B4 (quarter), A4 (quarter). The piece concludes with a double bar line and a final G4 note with a fermata.

## 3. D Major

1. 2. 3. 4.

Musical notation for D Major tuning canon. The staff is in treble clef with a key signature of two sharps (F# and C#) and a 4/4 time signature. The melody consists of four measures: 1. D4 (quarter), E4 (quarter), F#4 (quarter), G4 (quarter); 2. A4 (quarter), G4 (quarter), F#4 (quarter), E4 (quarter); 3. D4 (quarter), E4 (quarter), F#4 (quarter), G4 (quarter); 4. A4 (quarter), G4 (quarter), F#4 (quarter), E4 (quarter). The piece concludes with a double bar line and a final D4 note with a fermata.

## 4. A Major

1. 2. 3. 4.

Musical notation for A Major tuning canon. The staff is in treble clef with a key signature of three sharps (F#, C#, and G#) and a 4/4 time signature. The melody consists of four measures: 1. A4 (quarter), B4 (quarter), C#5 (quarter), D5 (quarter); 2. E5 (quarter), D5 (quarter), C#5 (quarter), B4 (quarter); 3. A4 (quarter), B4 (quarter), C#5 (quarter), D5 (quarter); 4. E5 (quarter), D5 (quarter), C#5 (quarter), B4 (quarter). The piece concludes with a double bar line and a final A4 note with a fermata.

# Tuning Canons

*New River Youth Symphony*

Baritone Saxophone

## 1. C Major

1.                    2.                    3.                    4.

Musical notation for C Major tuning canon. The staff is in treble clef with a key signature of one sharp (F#) and a 4/4 time signature. The melody consists of quarter notes: C4, D4, E4, F#4, G4, A4, B4, C5. The piece concludes with a double bar line, a repeat sign, and a final C4 note with a fermata.

## 2. G Major

1.                    2.                    3.                    4.

Musical notation for G Major tuning canon. The staff is in treble clef with a key signature of two sharps (F# and C#) and a 4/4 time signature. The melody consists of quarter notes: G4, A4, B4, C#5, D5, E5, F#5, G5. The piece concludes with a double bar line, a repeat sign, and a final G4 note with a fermata.

## 3. D Major

1.                    2.                    3.                    4.

Musical notation for D Major tuning canon. The staff is in treble clef with a key signature of two sharps (F# and C#) and a 4/4 time signature. The melody consists of quarter notes: D4, E4, F#4, G4, A4, B4, C#5, D5. The piece concludes with a double bar line, a repeat sign, and a final D4 note with a fermata.

## 4. A Major

1.                    2.                    3.                    4.

Musical notation for A Major tuning canon. The staff is in treble clef with a key signature of three sharps (F#, C#, and G#) and a 4/4 time signature. The melody consists of quarter notes: A4, B4, C#5, D5, E5, F#5, G#5, A5. The piece concludes with a double bar line, a repeat sign, and a final A4 note with a fermata.

# Tuning Canons

*New River Youth Symphony*

Trumpet 1

## 1. C Major

1.                      2.                      3.                      4.

Musical notation for C Major tuning canon. The staff is in treble clef with a key signature of one sharp (F#) and a 4/4 time signature. The melody consists of quarter notes: C4, D4, E4, F#4, G4, A4, B4, C5. The piece ends with a repeat sign and a final C4 note.

## 2. G Major

1.                      2.                      3.                      4.

Musical notation for G Major tuning canon. The staff is in treble clef with a key signature of two sharps (F# and C#) and a 4/4 time signature. The melody consists of quarter notes: G4, A4, B4, C#5, D5, E5, F#5, G6. The piece ends with a repeat sign and a final G4 note.

## 3. D Major

1.                      2.                      3.                      4.

Musical notation for D Major tuning canon. The staff is in treble clef with a key signature of two sharps (F# and C#) and a 4/4 time signature. The melody consists of quarter notes: D4, E4, F#4, G4, A4, B4, C#5, D5. The piece ends with a repeat sign and a final D4 note.

## 4. A Major

1.                      2.                      3.                      4.

Musical notation for A Major tuning canon. The staff is in treble clef with a key signature of three sharps (F#, C#, and G#) and a 4/4 time signature. The melody consists of quarter notes: A3, B3, C#4, D4, E4, F#4, G#4, A4. The piece ends with a repeat sign and a final A3 note.

# Tuning Canons

*New River Youth Symphony*

Trumpet 2

## 1. C Major

1.                      2.                      3.                      4.

Musical notation for C Major tuning canon. The staff is in treble clef with a key signature of one sharp (F#) and a 4/4 time signature. The melody consists of quarter notes: C4, D4, E4, F#4, G4, A4, B4, C5. The piece ends with a repeat sign and a final C4 note.

## 2. G Major

1.                      2.                      3.                      4.

Musical notation for G Major tuning canon. The staff is in treble clef with a key signature of two sharps (F# and C#) and a 4/4 time signature. The melody consists of quarter notes: G4, A4, B4, C#5, D5, E5, F#5, G5. The piece ends with a repeat sign and a final G4 note.

## 3. D Major

1.                      2.                      3.                      4.

Musical notation for D Major tuning canon. The staff is in treble clef with a key signature of two sharps (F# and C#) and a 4/4 time signature. The melody consists of quarter notes: D4, E4, F#4, G4, A4, B4, C#5, D5. The piece ends with a repeat sign and a final D4 note.

## 4. A Major

1.                      2.                      3.                      4.

Musical notation for A Major tuning canon. The staff is in treble clef with a key signature of three sharps (F#, C#, and G#) and a 4/4 time signature. The melody consists of quarter notes: A4, B4, C#5, D5, E5, F#5, G#5, A5. The piece ends with a repeat sign and a final A4 note.

# Tuning Canons

*New River Youth Symphony*

Trumpet 3

## 1. C Major

1.                    2.                    3.                    4.

Musical notation for C Major tuning canon. The staff is in treble clef with a key signature of one sharp (F#) and a 4/4 time signature. The melody consists of quarter notes: C4, D4, E4, F#4, G4, A4, B4, C5. The piece concludes with a double bar line, a repeat sign, and a final C4 note with a fermata.

## 2. G Major

1.                    2.                    3.                    4.

Musical notation for G Major tuning canon. The staff is in treble clef with a key signature of two sharps (F# and C#) and a 4/4 time signature. The melody consists of quarter notes: G4, A4, B4, C#5, D5, E5, F#5, G5. The piece concludes with a double bar line, a repeat sign, and a final G4 note with a fermata.

## 3. D Major

1.                    2.                    3.                    4.

Musical notation for D Major tuning canon. The staff is in treble clef with a key signature of two sharps (F# and C#) and a 4/4 time signature. The melody consists of quarter notes: D4, E4, F#4, G4, A4, B4, C#5, D5. The piece concludes with a double bar line, a repeat sign, and a final D4 note with a fermata.

## 4. A Major

1.                    2.                    3.                    4.

Musical notation for A Major tuning canon. The staff is in treble clef with a key signature of three sharps (F#, C#, and G#) and a 4/4 time signature. The melody consists of quarter notes: A3, B3, C#4, D4, E4, F#4, G#4, A4. The piece concludes with a double bar line, a repeat sign, and a final A3 note with a fermata.

# Tuning Canons

*New River Youth Symphony*

Horn in F

## 1. C Major

1.                      2.                      3.                      4.

Musical notation for C Major tuning canon. The staff is in treble clef with a key signature of one sharp (F#) and a 4/4 time signature. The melody consists of four measures: 1. quarter note F#, quarter note A, quarter note B, quarter note C; 2. quarter note D, quarter note E, quarter note F#, quarter note G; 3. quarter note A, quarter note B, quarter note C, quarter note D; 4. quarter note E, quarter note F#, quarter note G, quarter note A. The piece concludes with a double bar line, a repeat sign, a whole note C, and a final key signature change to three sharps (F#, C#, G#).

## 2. G Major

6    1.                      2.                      3.                      4.

Musical notation for G Major tuning canon. The staff is in treble clef with a key signature of two sharps (F#, C#) and a 4/4 time signature. The melody consists of four measures: 1. quarter note G, quarter note A, quarter note B, quarter note C; 2. quarter note D, quarter note E, quarter note F#, quarter note G; 3. quarter note A, quarter note B, quarter note C, quarter note D; 4. quarter note E, quarter note F#, quarter note G, quarter note A. The piece concludes with a double bar line, a repeat sign, a whole note G, and a final key signature change to three sharps (F#, C#, G#).

## 3. D Major

11    1.                      2.                      3.                      4.

Musical notation for D Major tuning canon. The staff is in treble clef with a key signature of three sharps (F#, C#, G#) and a 4/4 time signature. The melody consists of four measures: 1. quarter note D, quarter note E, quarter note F#, quarter note G; 2. quarter note A, quarter note B, quarter note C, quarter note D; 3. quarter note E, quarter note F#, quarter note G, quarter note A; 4. quarter note B, quarter note C, quarter note D, quarter note E. The piece concludes with a double bar line, a repeat sign, a whole note D, and a final key signature change to three sharps (F#, C#, G#).

## 4. A Major

16    1.                      2.                      3.                      4.

Musical notation for A Major tuning canon. The staff is in treble clef with a key signature of three sharps (F#, C#, G#) and a 4/4 time signature. The melody consists of four measures: 1. quarter note A, quarter note B, quarter note C, quarter note D; 2. quarter note E, quarter note F#, quarter note G, quarter note A; 3. quarter note B, quarter note C, quarter note D, quarter note E; 4. quarter note F#, quarter note G, quarter note A, quarter note B. The piece concludes with a double bar line, a repeat sign, a whole note A, and a final key signature change to three sharps (F#, C#, G#).

# Tuning Canons

*New River Youth Symphony*

Trombone 1

## 1. C Major

1. 2. 3. 4.

Musical notation for C Major tuning canon. The staff is in bass clef with a 4/4 time signature. The melody consists of four measures: 1. C2 (one ledger line below), 2. C3 (below staff), 3. C4 (below staff), 4. C5 (below staff). The final measure contains a whole note C5 with a fermata, followed by a repeat sign and a double bar line.

## 2. G Major

1. 2. 3. 4.

Musical notation for G Major tuning canon. The staff is in bass clef with a key signature of one sharp (F#) and a 4/4 time signature. The melody consists of four measures: 1. G2 (below staff), 2. G3 (below staff), 3. G4 (below staff), 4. G5 (below staff). The final measure contains a whole note G5 with a fermata, followed by a repeat sign and a double bar line.

## 3. D Major

1. 2. 3. 4.

Musical notation for D Major tuning canon. The staff is in bass clef with a key signature of two sharps (F# and C#) and a 4/4 time signature. The melody consists of four measures: 1. D2 (below staff), 2. D3 (below staff), 3. D4 (below staff), 4. D5 (below staff). The final measure contains a whole note D5 with a fermata, followed by a repeat sign and a double bar line.

## 4. A Major

1. 2. 3. 4.

Musical notation for A Major tuning canon. The staff is in bass clef with a key signature of three sharps (F#, C#, and G#) and a 4/4 time signature. The melody consists of four measures: 1. A2 (below staff), 2. A3 (below staff), 3. A4 (below staff), 4. A5 (below staff). The final measure contains a whole note A5 with a fermata, followed by a repeat sign and a double bar line.



# Tuning Canons

*New River Youth Symphony*

Trombone 2

## 1. C Major

1.                      2.                      3.                      4.



## 2. G Major

1.                      2.                      3.                      4.



## 3. D Major

1.                      2.                      3.                      4.



## 4. A Major

1.                      2.                      3.                      4.



# Tuning Canons

*New River Youth Symphony*

Baritone BC

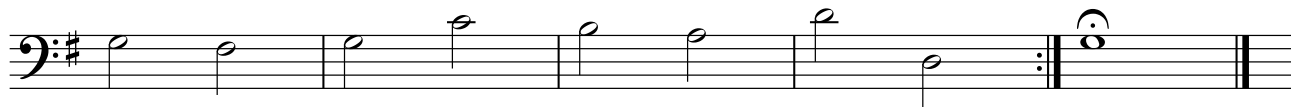
## 1. C Major

1.                      2.                      3.                      4.



## 2. G Major

1.                      2.                      3.                      4.



## 3. D Major

1.                      2.                      3.                      4.



## 4. A Major

1.                      2.                      3.                      4.



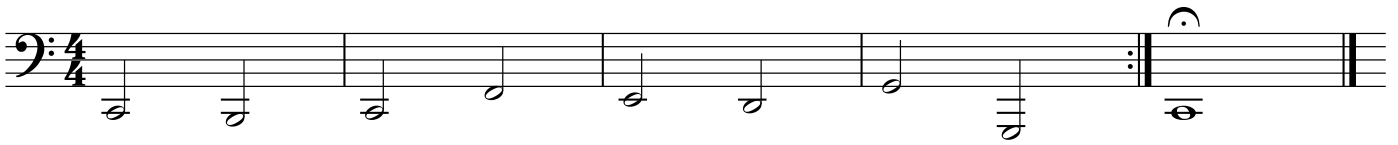
# Tuning Canons

*New River Youth Symphony*

Tuba

## 1. C Major

1.                      2.                      3.                      4.



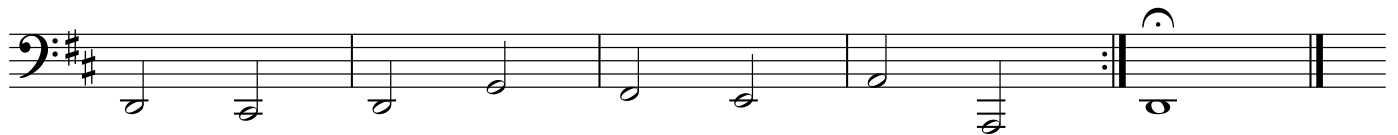
## 2. G Major

1.                      2.                      3.                      4.



## 3. D Major

1.                      2.                      3.                      4.



## 4. A Major

1.                      2.                      3.                      4.



Timpani

*New River Youth Symphony*  
**Tuning Canons** <sup>2</sup>/<sub>4</sub> G Major

**1. C Major**

1.

TACET

TACET



**3. D Major**

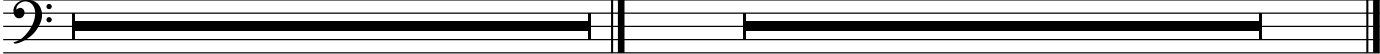
**4. A Major**

1.

1.

TACET

TACET



Piano

*New River Youth Symphony*

# Tuning Canons

## 1. C Major

2.

3.

4.

Musical notation for C Major tuning canon. The score is in 4/4 time and consists of two staves: a treble clef staff and a bass clef staff. The melody in the treble clef starts on middle C (C4) and moves up stepwise through D4, E4, F4, G4, A4, and B4. The bass line starts on C3 and moves up stepwise through D3, E3, F3, G3, A3, and B3. The piece concludes with a double bar line and repeat dots, followed by a final chord consisting of C4, G4, and C5 in the treble clef, and C3, G2, and C3 in the bass clef.

## 2. G Major

1.

2.

3.

4.

Musical notation for G Major tuning canon. The score is in 4/4 time and consists of two staves: a treble clef staff and a bass clef staff. The key signature has one sharp (F#). The melody in the treble clef starts on G4 and moves up stepwise through A4, B4, C5, B4, A4, and G4. The bass line starts on G2 and moves up stepwise through A2, B2, C3, D3, E3, and F#3. The piece concludes with a double bar line and repeat dots, followed by a final chord consisting of G4, B4, and D5 in the treble clef, and G2, B1, and D2 in the bass clef.

## 3. D Major

1.

2.

3.

4.

Musical notation for D Major tuning canon. The score is in 4/4 time and consists of two staves: a treble clef staff and a bass clef staff. The key signature has two sharps (F# and C#). The melody in the treble clef starts on D4 and moves up stepwise through E4, F#4, G4, A4, B4, and C#5. The bass line starts on D2 and moves up stepwise through E2, F#2, G2, A2, B2, and C#3. The piece concludes with a double bar line and repeat dots, followed by a final chord consisting of D4, F#4, and A5 in the treble clef, and D2, F#1, and A1 in the bass clef.

## 4. A Major

1.

2.

3.

4.

Musical notation for A Major tuning canon. The score is in 4/4 time and consists of two staves: a treble clef staff and a bass clef staff. The key signature has three sharps (F#, C#, and G#). The melody in the treble clef starts on A4 and moves up stepwise through B4, C#5, B4, A4, G#4, and A4. The bass line starts on A2 and moves up stepwise through B2, C#3, D3, E3, F#3, and G#3. The piece concludes with a double bar line and repeat dots, followed by a final chord consisting of A4, C#5, and E5 in the treble clef, and A2, C#1, and E1 in the bass clef.

# Tuning Canons

Violin I

*New River Youth Symphony*

## 1. C Major

1.                      2.                      3.                      4.

Musical notation for C Major tuning canon. The staff is in treble clef with a 4/4 time signature. The melody consists of four measures: 1. C4 (quarter), E4 (quarter), G4 (quarter), F4 (quarter); 2. E4 (quarter), G4 (quarter), A4 (quarter), G4 (quarter); 3. G4 (quarter), F4 (quarter), E4 (quarter), D4 (quarter); 4. F4 (quarter), E4 (quarter), D4 (quarter), C4 (quarter). The piece concludes with a repeat sign and a final C4 note.

## 2. G Major

1.                      2.                      3.                      4.

Musical notation for G Major tuning canon. The staff is in treble clef with a key signature of one sharp (F#) and a 4/4 time signature. The melody consists of four measures: 1. G4 (quarter), B4 (quarter), D5 (quarter), C5 (quarter); 2. B4 (quarter), D5 (quarter), E5 (quarter), D5 (quarter); 3. D5 (quarter), C5 (quarter), B4 (quarter), A4 (quarter); 4. C5 (quarter), B4 (quarter), A4 (quarter), G4 (quarter). The piece concludes with a repeat sign and a final G4 note.

## 3. D Major

1.                      2.                      3.                      4.

Musical notation for D Major tuning canon. The staff is in treble clef with a key signature of two sharps (F# and C#) and a 4/4 time signature. The melody consists of four measures: 1. D4 (quarter), F#4 (quarter), A4 (quarter), G#4 (quarter); 2. F#4 (quarter), A4 (quarter), B4 (quarter), A4 (quarter); 3. A4 (quarter), G#4 (quarter), F#4 (quarter), E4 (quarter); 4. G#4 (quarter), F#4 (quarter), E4 (quarter), D4 (quarter). The piece concludes with a repeat sign and a final D4 note.

## 4. A Major

1.                      2.                      3.                      4.

Musical notation for A Major tuning canon. The staff is in treble clef with a key signature of three sharps (F#, C#, and G#) and a 4/4 time signature. The melody consists of four measures: 1. A4 (quarter), C#5 (quarter), E5 (quarter), D#5 (quarter); 2. C#5 (quarter), E5 (quarter), F#5 (quarter), E5 (quarter); 3. E5 (quarter), D#5 (quarter), C#5 (quarter), B4 (quarter); 4. F#5 (quarter), E5 (quarter), D#5 (quarter), A4 (quarter). The piece concludes with a repeat sign and a final A4 note.

# Tuning Canons

*New River Youth Symphony*

Violin II

## 1. C Major

1.                      2.                      3.                      4.

Musical notation for C Major tuning canon. The staff is in 4/4 time with a treble clef. The notes are: 1. C4, 2. D4, 3. E4, 4. F4, 5. G4, 6. A4, 7. B4, 8. C5. The piece ends with a repeat sign and a final C5 note.

## 2. G Major

1.                      2.                      3.                      4.

Musical notation for G Major tuning canon. The staff is in 4/4 time with a treble clef and one sharp (F#). The notes are: 1. G4, 2. A4, 3. B4, 4. C5, 5. B4, 4. A4, 3. G4. The piece ends with a repeat sign and a final G4 note.

## 3. D Major

1.                      2.                      3.                      4.

Musical notation for D Major tuning canon. The staff is in 4/4 time with a treble clef and two sharps (F# and C#). The notes are: 1. D4, 2. E4, 3. F#4, 4. G4, 5. A4, 6. B4, 7. C#5, 8. D5. The piece ends with a repeat sign and a final D5 note.

## 4. A Major

1.                      2.                      3.                      4.

Musical notation for A Major tuning canon. The staff is in 4/4 time with a treble clef and three sharps (F#, C#, and G#). The notes are: 1. A4, 2. B4, 3. C#5, 4. D5, 5. C#5, 4. B4, 3. A4. The piece ends with a repeat sign and a final A4 note.

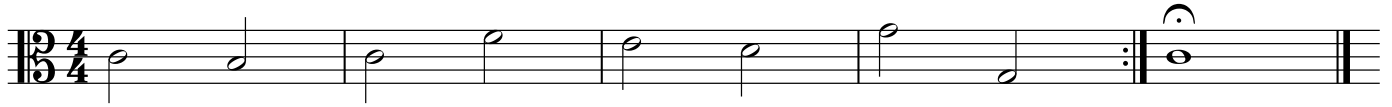
# Tuning Canons

*New River Youth Symphony*

Viola

## 1. C Major

1.                      2.                      3.                      4.



## 2. G Major

1.                      2.                      3.                      4.



## 3. D Major

1.                      2.                      3.                      4.



## 4. A Major

1.                      2.                      3.                      4.





# Tuning Canons

*New River Youth Symphony*

Cello

## 1. C Major

1.                      2.                      3.                      4.



## 2. G Major

1.                      2.                      3.                      4.



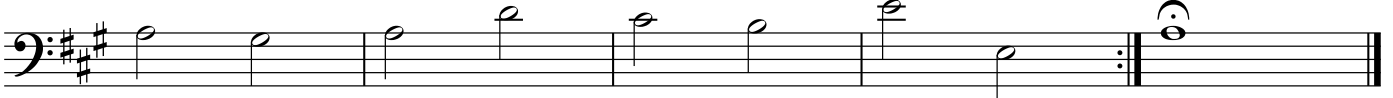
## 3. D Major

1.                      2.                      3.                      4.



## 4. A Major

1.                      2.                      3.                      4.



Double Bass

# Tuning Canons

*New River Youth Symphony*

## 1. C Major

1.                    2.                    3.                    4.

Musical notation for C Major tuning canon. The staff is in bass clef with a 4/4 time signature. The melody consists of four measures: C4 (half), E4 (quarter), G4 (quarter), and F4 (half). The piece concludes with a double bar line and a repeat sign, followed by a whole note C4.

## 2. G Major

1.                    2.                    3.                    4.

Musical notation for G Major tuning canon. The staff is in bass clef with a key signature of one sharp (F#) and a 4/4 time signature. The melody consists of four measures: G3 (half), B3 (quarter), D4 (quarter), and C4 (half). The piece concludes with a double bar line and a repeat sign, followed by a whole note G3.

## 3. D Major

1.                    2.                    3.                    4.

Musical notation for D Major tuning canon. The staff is in bass clef with a key signature of two sharps (F# and C#) and a 4/4 time signature. The melody consists of four measures: D3 (half), F#3 (quarter), A3 (quarter), and G3 (half). The piece concludes with a double bar line and a repeat sign, followed by a whole note D3.

## 4. A Major

1.                    2.                    3.                    4.

Musical notation for A Major tuning canon. The staff is in bass clef with a key signature of three sharps (F#, C#, and G#) and a 4/4 time signature. The melody consists of four measures: A2 (half), C#3 (quarter), E3 (quarter), and D3 (half). The piece concludes with a double bar line and a repeat sign, followed by a whole note A2.